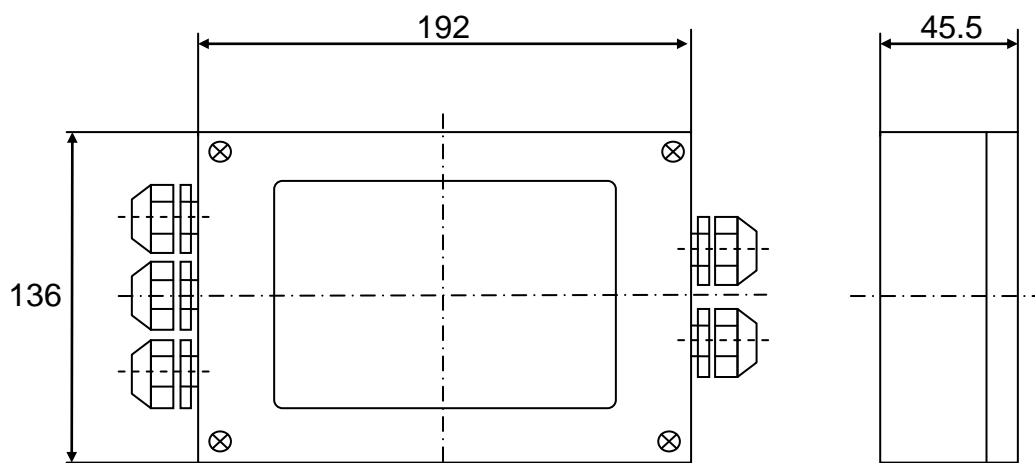




- Stainless steel casing, four or six wire options, special sealing joint, durable and good sealing.
- Trouble free system integration
- Reduced installation times
- Improved logistics
- Size and space savings
- A junction box is an enclosed distribution panel for the connection or branching of one or more electrical circuits.
- A junction box is a box in which conductors or wires are split or terminated.
- Quickly and easily connect multiple load sensors to the weighing instrument unit.



Application



Matching
Combination /



Matching
Combination /



Load Cell + Junction Box + Indicator

Suitable for mosr load cell measurements, saving overall measurement costs and achieving many-to-one measurement results.



Matching
Combination /



Load Cell + Junction Box

mV signal output, can provide load cell for many different applications.