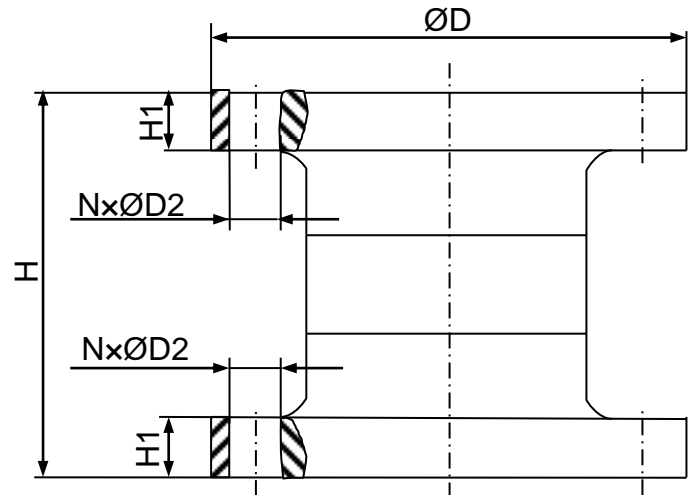
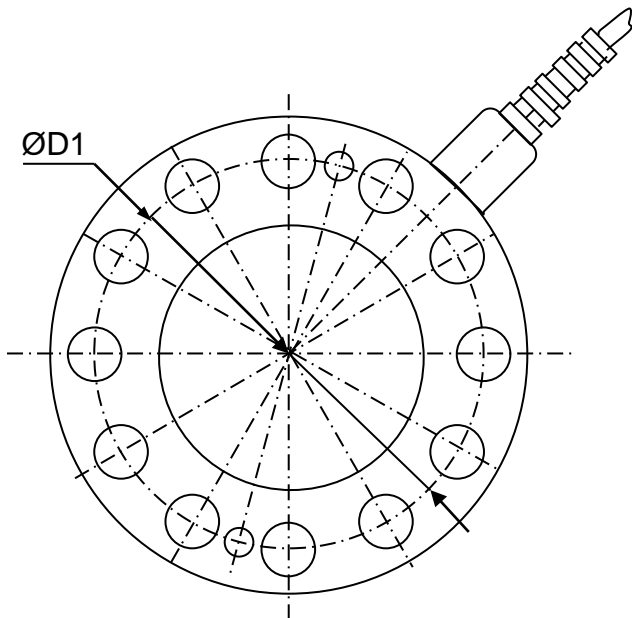


Rated Load(t)	H	H1	D	D1	NxØD2
40~60	160	25	197	160	12xØ22
100	230	40	240	200	12xØ26
150~200	326	57	305	250	12xØ32
300	358	69	415	360	18xØ33



## TECHNICAL PARAMETE

Exc+(Blue); Exc-(Black); Sig+(White); Sig-(Red); Sen+(Blue); Sen-(Yellow)

Rated capacities(Emax)	40,60,100,150,200,300t	Insulation resistance	$\geq 5000M\Omega$
Accuracy class	0.3	Temperature range, Compensated	-10°C ~ +40°C
Sensitivity	2.0±0.01mV/V	Temperature range, Operating	-30°C ~ +70°C
Non-linearity	0.3%F.S	Maximum safe overload	150%F.S
Hysteresis error	0.3%F.S	Ultimate overload	200%F.S
Creep error(30min)	±0.05%F.S	Excitation, recommend	10~12VDC
TC ZERO	±0.03F.S/10°C	Protection Class	IP67
TC SPAN	±0.03F.S/10°C	Construction	Alloy Steel
Input resistance	750±10Ω	Cable Length	14m(40t~100t)
Output resistance	702±5Ω		20m(150t~300t)