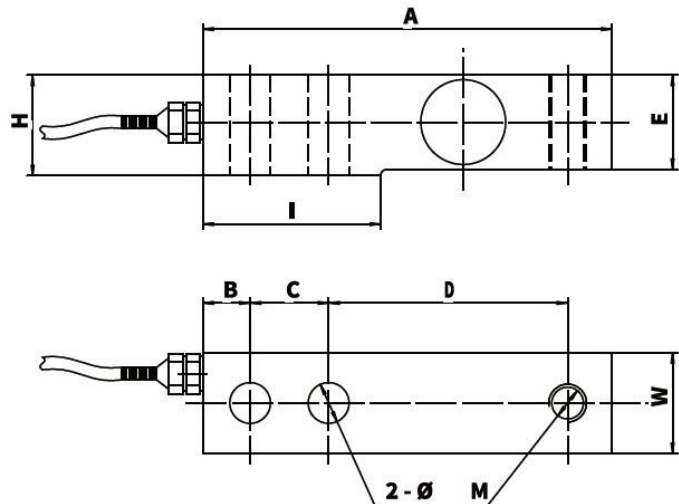




## 特點及用途 Features and Uses

- ❖ 結構緊湊 Tight construction
- ❖ 綜合精度高 High stability
- ❖ 長期穩定性好 High stability
- ❖ 優質合金鋼表面鍍鎳 Alloy steel plated with nickel
- ❖ 大力值試驗機、料斗秤、吊鈎秤、插拔力測試儀等，拉壓力測試儀器以及自動設備領域和測試領域。Mainly applied in tension and compression testing instruments and automatic equipments fields, such as small range of force testing instruments, hopper scales, lifting hook scales, insertion force test instruments, and etc.

感測器受力圖 Force diagram of sensor



量程	A	B	C	D	E	W	H	M	2-Φ	I
50kg-2t	130	15	25	76	30	32	32	M12×1.75	Φ13	56
2.5-5t	171	19	38	96	38	38	43	M18×1.5	Φ20	80
6-10t	225.6	25.4	50.8	122.9	50.8	50.8	56	M24×2	Φ26.4	105

## Technical Parameter

4Wires : Exc+(Red); Exc-(Black); Sig+(Green); Sig-(White)

Rated Capacities	0.5~2t、2.5~5t、6~10t	Recommended Excitation	5~15VDC
Rated Output	2.0±0.05mV/V	Operating Temp Range	-20°C~80°C
Zero Balance	±1%F.S.	Safe Overload	150%
Non-linearity	0.03%F.S.	Maximum Overload	200%
Hysteresis	0.03%F.S.	Impedance	350Ω
Repeatability	0.02%F.S.	Response Frequency	10kHz
Creep(30min)	0.03%F.S.	Material	Alloy steel
Temp Effect On Output	0.03%F.S/10°C	Cable Specifications	Φ5x3m
Temp Effect On Zero	0.05%F.S/10°C	TEDS	Optional
Insulation resistance	≥5000MΩ		