

Delta Transducers

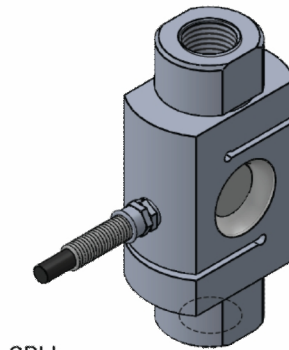
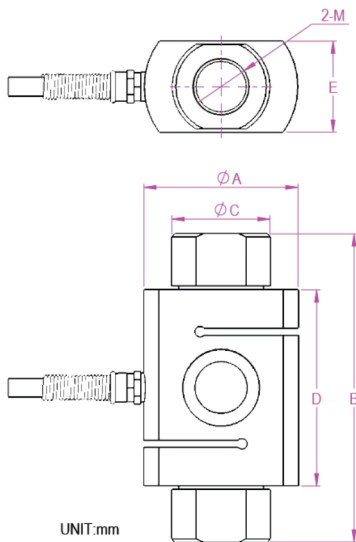
Model : SBLL



Features & Application

simple and convenient installation, high precision and high dynamic frequency in one, main application: insertion force test, the rivet machine, welding machine, lamination machine, hot and cold pressure keyboard button feel degrees such as pull stress testing instruments, automation equipment, test area.

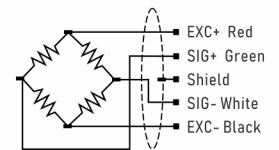
Mounting Dimension



SBLL

量程	φA	B	φC	D	E	M
0-1000kg	44	88	28	56	26	M16x1.5
1-5T	58	112	38	68	44	M24x3
10T	84	160	60	104	58	M36x4
20T	88	156	68.5	108	76	M36x4

Wiring



Technical Parameters

Specifications	Technique
Rated load	100、200、300、500kg、1、2、3、5、10、20t
Comprehensive error	≤±0.1%
Non-linearity	±0.05%
Rated output	2.0±10% mV/V
Creep	±0.05% F.S. / 30min.
Zero balance	±1.0% F.S.
Input resistance	350±20Ω
Output resistance	350±5Ω
Insulation resistance	≥5000MΩ / 100VDC
Temp.effect on span	±0.05% F.S. / 10°C
Temp.effect on zero	±0.05% F.S. / 10°C
Compensated temp range	-10~60°C
Use temp range	-20~80°C
Excitation voltage	5~15V
Safe overload	150% F.S.
Ultimate overload	200% F.S.
Defend grade	IP65