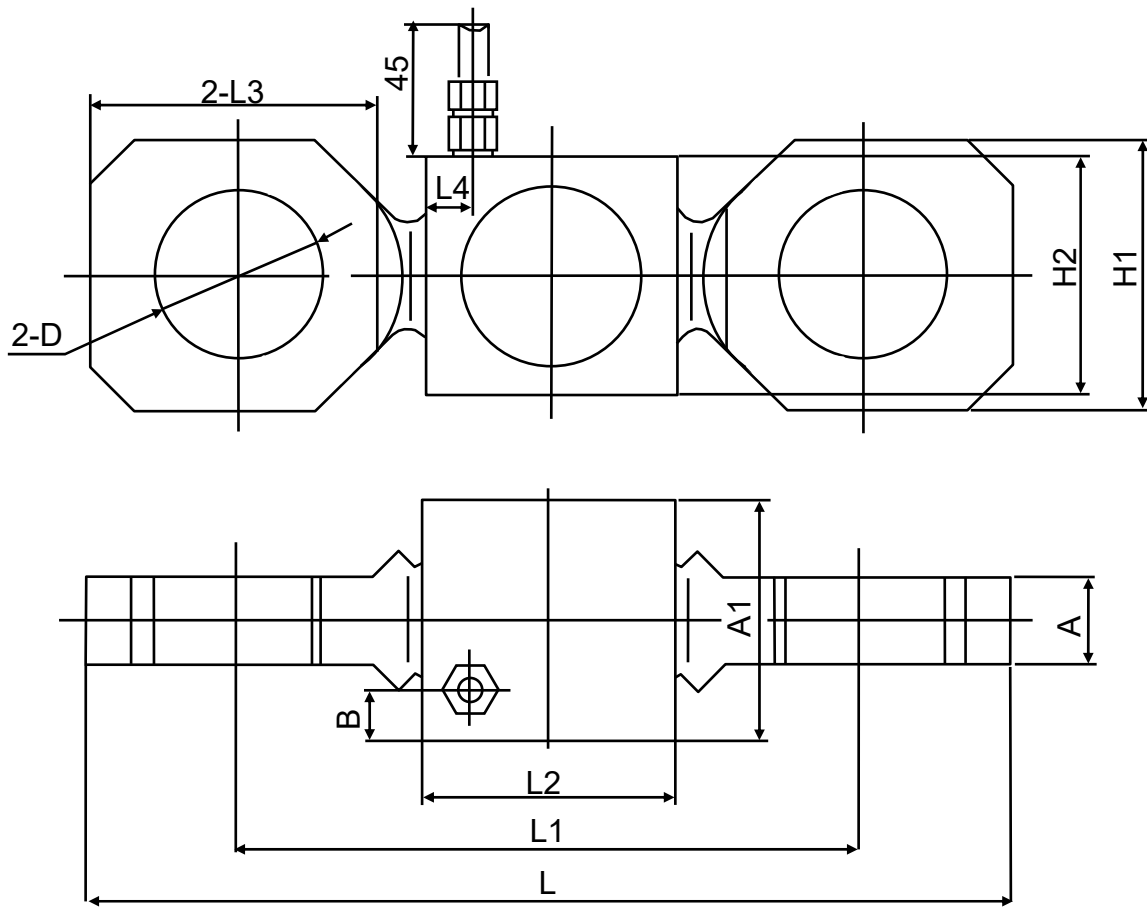


Rated Load(t)	L	L1	L2	L3	L4	H1	H2	A	A1	B	D
2,3	154	104	42	48	8	50	40	15	40	8.5	Φ32
5	211	141	63	62	16.8	68	58	20	55	8.5	Φ35
10	241	161	64	78	17.3	85	68	25	62	8.75	Φ47
15, 20	310	202	80	102	20	108	80	35	70	10	Φ55
30	351	227	85	118	23	118	85	40	75	10	Φ62
50	351	227	85	118	23	118	85	60	80	10	Φ68

Crane scale · tension measuring equipment



## TECHNICAL PARAMETER

Exc+(Red); Exc-(Black); Sig+(Green); Sig-(White)

Rated capacities	2, 3, 5, 10, 15, 20, 30, 50t	Insulation resistance	≥5000MΩ
Accuracy class	0.03	Temperature range, Compensated	-10℃ ~ +40℃
Sensitivity	1.8±0.005mV/V(1t)	Temperature range, Operating	-30℃ ~ +70℃
Non-linearity	±0.03 F.S	Maximum safe overload	150%F.S
Hysteresis error	±0.03%F.S	Ultimate overload	200%F.S
Creep error(30min)	±0.03%F.S	Excitation, recommend	10~12VDC
TC ZERO	±0.02F.S/10℃	Protection Class	IP67
TC SPAN	±0.02F.S/10℃	Construction	Alloy Steel
Input resistance	400±20Ω	Cable Length	2m
Output resistance	352±3Ω		