

Delta Transducers

Model : ARI8-101

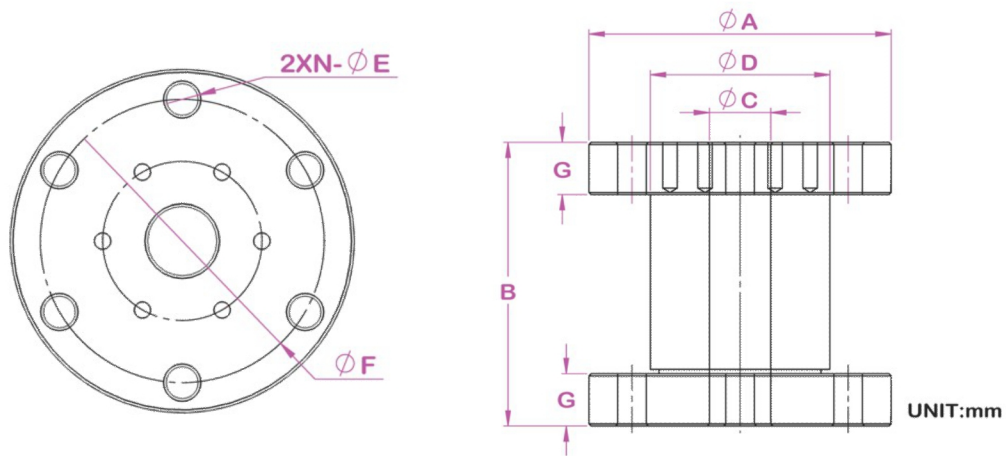


Features & Application

Compact structure, easy to install, protection grade:IP65, used for torque measurement of static and non continuous rotation.

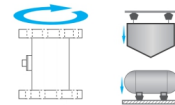
It is widely used in static torque testing system of testing machine, torque wrench, steering machine, electric actuator, valve and transmission.

Mounting Dimension

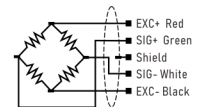


CAP(N.m)	A	B	C	D	E	F	N	G
5,10,20,30	69	65	14	41	6.5	57	6	12
50,100,200,300	135	73	23	150	150	17	17	270
500,1000	98	80	30	60	8.5	80	8	15
2000,3000,5000	125	96	45	79	13	105	8	20
10000	160	120	40	101	17	130	8	30
20000	210	120	/	112	22	165	8	30
50000	280	160	/	180	26	230	14	35
100000	350	200	/	176	26	285	12	50

Load Direction



Wiring



Technical Parameters

Specifications	Technique
Capacity	5,10,20,30,50,100,200,300,500,1000,2000,3000,5000,10000,20000,50000,100000 N.m
Rated Output	1.0~2.0mV/V
Zero Balance	±2%F.S.
Response Frequency	10kHz
Non-linearity	0.3% F.S.
Hysteresis	0.1% F.S.
Non-repeatability	0.1% F.S.
Creep (30min)	0.1% F.S.
Safe Overload	120%
Ultimate Overload	150%
Operating Temp.	-20~80°C
Temp. Shift Zero	0.05% F.S. / 10°C
Temp. Shift Span	0.05% F.S. / 10°C
Impedance	350 / 700Ω
Range Excitation	5~15V
Insulation Resistance	>5000MΩ / 100VDC
Cable	Ø5 X 3m