

Delta Transducers

Model : ARI710

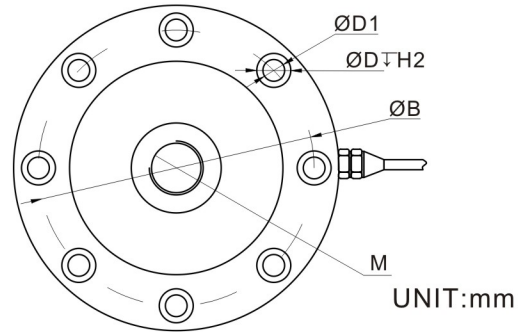
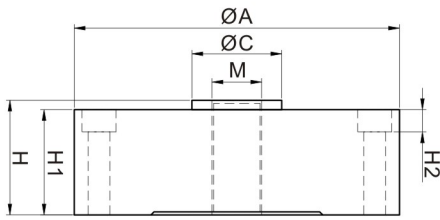


Features & Application

Using sensors is special stainless steel material manufacturing, rubber sealing processing, surface anodic oxidation, applicable to a variety of conditions.

Simple structure, convenient installation. Apply to the testing machine, pressure machine, hydraulic press, heat and cold press, electronic hook, said bin said, etc.

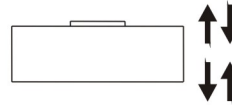
Mounting Dimension



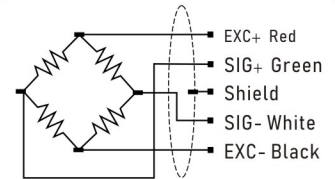
UNIT:mm

CAP(t)	øA	øB	øC	M	H	H1	H2	øD	øD1
0.01t	72	59	18	M12x1.75	24	24	7.2	8-ø10	8-ø5.5
0.03,0.05,0.1,0.2,0.3,0.5,0.8,1t	74	63	24	M16x1.5	34	30	7.2	8-ø9	8-ø6
1.2,3,5,8t	105	89	32	M16x1.5	37	34	7.2	8-ø11	8-ø7
10,20t	121	101.8	39	M32x1.5	53.5	41	10.5	8-ø14	8-ø9
30t	141	116.8	50.4	M40x1.5	57.2	50.8	11	8-ø18	8-ø11
50,60t	208	174	95	M64x3	70	/	15	16-ø20	16-ø13
100,200t	280	230	136	M76x3	90	/	20	16-ø26	16-ø17
300,400t	360	300	190	M100x3	110	/	20	20-ø40	20-ø25
500t	420	370	266	M130x4	140	/	30	20-ø42	20-ø28

Load Direction



Wiring



Technical Parameters

Specifications	Technique
Capacity	0.01t (72mm), 0.03, 0.05, 0.1, 0.2, 0.3, 0.5, 0.8, 1 t (74mm), 1, 2, 3, 5, 8 t (105mm), 10, 20 t (121mm), 30 t (141mm), 50, 60 t (208mm), 100, 200 t (280mm), 300, 400 t (360mm), 500 t (420mm)
Rated Output	2.0±10% mV/V
Zero Balance	±1% F.S.
Response Frequency	10kHz
Non-linearity	0.05% F.S.
Hysteresis	0.05% F.S.
Non-repeatability	0.1% F.S.
Creep (30min)	0.03% F.S.
Safe Overload	150%
Maximum Overload	200%
Operating Temp Range	-20~80°C
Temp. Effect on Output	0.03% F.S. /10 °C
Temp. Effect on Zero	0.03% F.S. /10 °C
Impedance	20~1000kg:700/1400Ω 1~30T:700Ω 50~500T:1400Ω
Range Excitation	5~15V
Insulation Resistance	>5000MΩ / 100VDC
Cable	Ø5 X 3m