

Delta Transducers

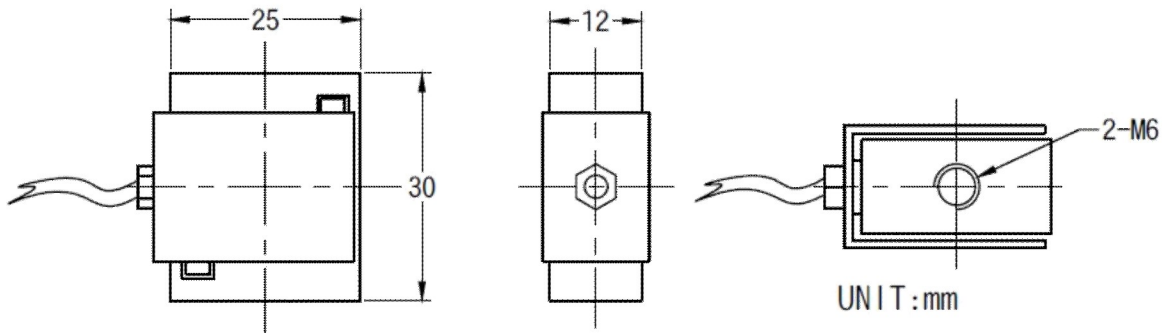
Model : ARI630C



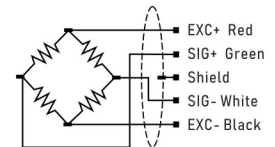
Features & Application

Small size, simple and convenient installation, high precision and high dynamic frequency in one, main application: insertion force test, the rivet machine, welding machine, lamination machine, hot and cold pressure keyboard button feel degrees such as pull stress testing instruments, automation equipment, test area.

Mounting Dimension



Wiring



Technical Parameters

Specifications	Technique
Rated load	1、 3、 5、 10、 20、 30、 50、 100 kg
Comprehensive error	$\leq \pm 0.1\%$
Non-linearity	0.1%
Rated output	1.0 / $2.0 \pm 10\%$ mV/V
Creep	$\pm 0.05\%$ F.S. / 30min.
Zero balance	$\pm 2.0\%$ F.S.
Input resistance	$410 \pm 10\Omega$
Output resistance	$350 \pm 5\Omega$
Insulation resistance	$\geq 5000M\Omega$ / 100VDC
Temp.effect on span	$\pm 0.05\%$ F.S. / 10°C
Temp.effect on zero	$\pm 0.05\%$ F.S. / 10°C
Compensated temp range	$-10 \sim 60^\circ\text{C}$
Use temp range	$-20 \sim 80^\circ\text{C}$
Excitasion voltage	5~12V
Safe overload	120%F.S.
Ultimate overload	150%F.S.
Defend grade	IP65