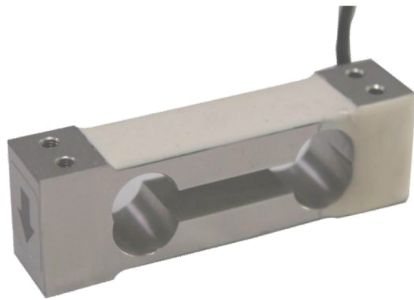


# Delta Transducers

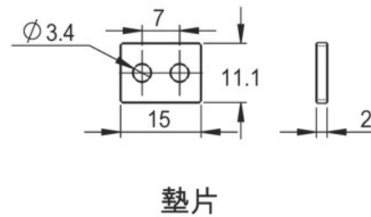
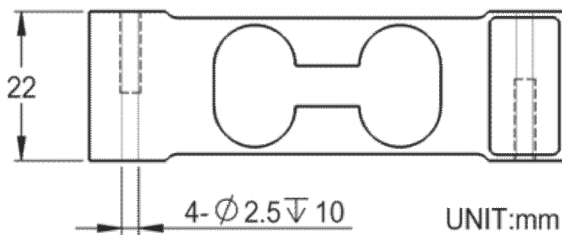
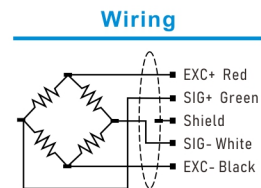
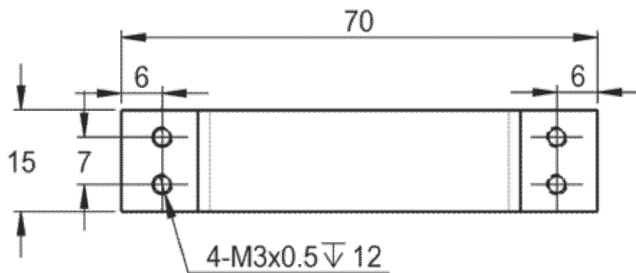
**Model : ARI2**



## Features & Application

Single point parallel beam, aluminium load cell, used for electronic scales, platform scales and balance.

## Mounting Dimension



## Technical Parameters

Specifications	Technique
Rated load	0.3, 0.6, 1, 2, 3, 5, 7, 10 kg
Rated output	1.0 mV/V $\pm$ 15% , 2.0 mV/V $\pm$ 10%
Zero balance	$\pm$ 0.0200 % R.O.
Non-linearity	0.02 % R.O.
Hysteresis	0.02 % R.O.
Non-repeatability	0.02 % R.O.
Creep (30min)	0.02 % R.O.
Safe overload	150% R.O.
Ultimate overload	200% R.O.
Temp.effect on output	0.002% R.O. / °C
Temp.effect on zero	0.003% R.O. / °C
Input resistance	410 $\pm$ 15 $\Omega$
Output resistance	350 $\pm$ 3 $\Omega$
Insulation resistance	$\geq$ 5000M $\Omega$ / 50VDC
Recommended excitation	5~12 VDC
Maximum excitation	15 VDC
Operating temperature range	-20~60°C
Cable	$\phi$ 3 x 0.3m