

Remote Modules

MODEL:AC-3088

RS-485 Interface

Supports Modbus RTU/ASCII

Operation Range: Up To 1200 Meters

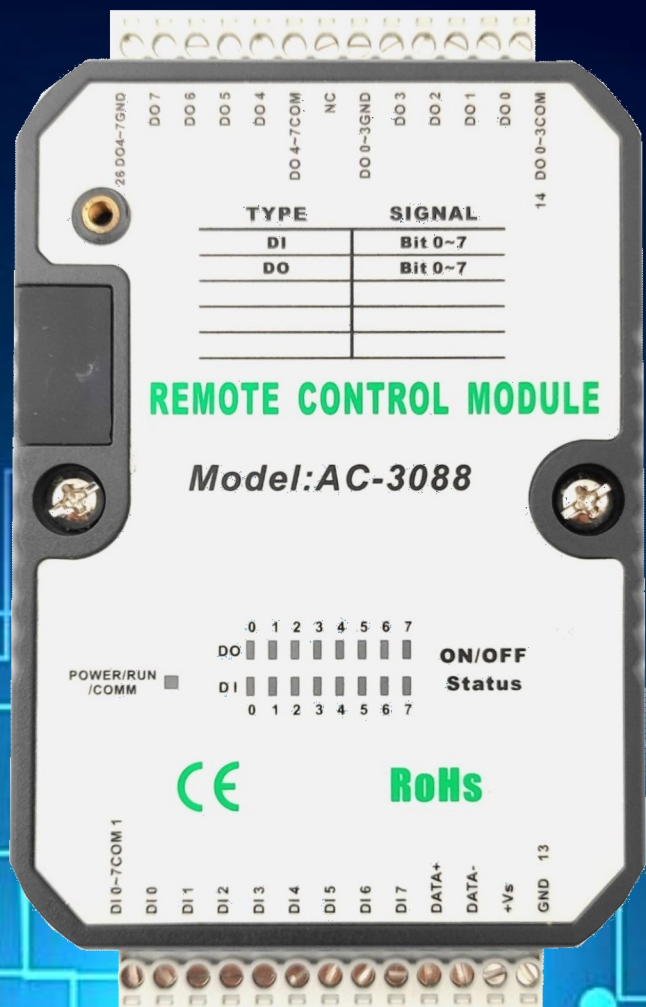
Operation Temperature -20~+75°C

Isolation Voltage: 5000VDC

Surge, EFT And ESD Protection

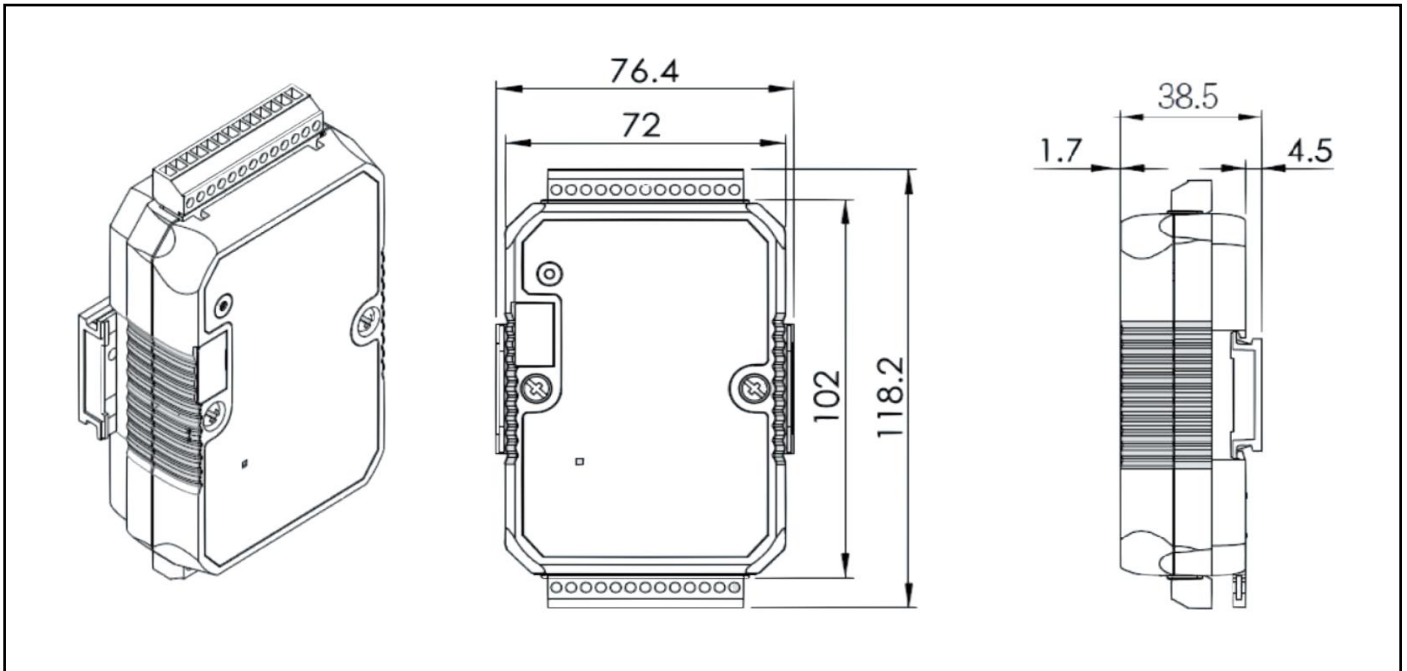
LED Indicator

Dual Watchdog Timer



Dimension:

Unit:mm



Specifications:

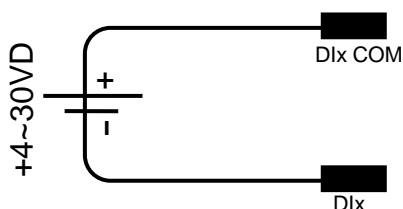
Model	AC-3088
Operation Voltage	10~30VDC/24VAC
Output	8 (Sink)
Input	8 Isolation DI Status Low:1VDC Status High:>5~30VDC
Power Consumption	24VDC. Nearly 2.8W
Input Power	+10~+30 VDC
Output Type	Sink
Input Type	Isolated Digital
Continuous Current	10~40VDC (200mA)
Output Rating (max)	40VDC/200mA
Modbus Support	RS485 Modbus RTU/ASCII
Communication Baud Rate	1200~115200bps
Communication Address	01~255
Isolation	5000VDC
Operation Temperature	-20 to +75°C
Degree of Protection	IP20
Installation	35mm DIN-Rail or Flush Mounting
Dimension(WxHxD) mm	76.4 x 118.2 x 38.5

Pin Table:



Item	Pin Assignment	Item	Pin Assignment
1	DI0~7COM	14	DO 0~3COM
2	DI0	15	DO0
3	DI1	16	DO1
4	DI2	17	DO2
5	DI3	18	DO3
6	DI4	19	DO0~3GND
7	DI5	20	NC
8	DI6	21	DO4~7COM
9	DI7	22	DO4
10	DATA+	23	DO5
11	DATA-	24	DO6
12	+VS	25	DO7
13	GND	26	DO4~7GND

Input



Output

